



DIGITAL MULTIFUNCTIONAL  
COLOUR SYSTEM

CDC 1725 

CDC 1725

## REDEFINING COLOUR!

Produce your documents with the innovative CDC 1725 multifunctional colour system – and the results will speak for themselves. Thanks to its new toner technology and only 8.1 seconds for the first page in colour and 6.2 seconds for black/white, you will have any colour document on your desk, from A6R to A3, in no time at all and in absolutely brilliant quality. This eases your workload, particularly as its performance is especially durable, reliable and economical and it looks good too with its new elegant anthracite design!

### TECHNOLOGY THAT SETS THE TONE – NO MATTER WHERE YOU LOOK!

Using an optimised toner control, the CDC 1725 prints text and lines with precision and provides an expanded colour range for image reproduction. In conjunction with the trapping function (to avoid white gaps) and innovative development engineering, the CDC 1725 achieves only the best in optical performance. With a vertical paper feed and 25 A4 colour pages per minute, an optional document processor for simultaneous duplex scanning, further optimised area segmentation of text and graphics, and the creation of compressed PDF files to reduce the data volume, the CDC 1725 gives an efficient and productive performance. All of this is complemented by additional features such as extensive security settings, SynControl technology for parallel data processing, the extremely user-friendly colour display and flexible operation using the USB direct print and scan-to-USB features. To sum it up: Pure perfection!





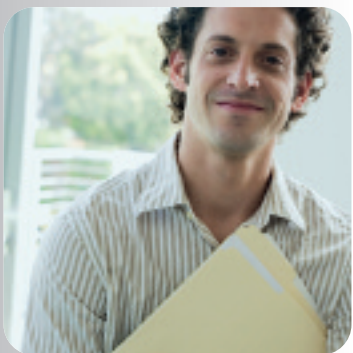
## PERFECTLY CONCEIVED:

- Accelerated printing and copying of 25 A4 pages per minute in colour and b/w
- Large colour display for maximum ease of use
- High quality with innovative toner technology
- Simultaneous duplex scanning\*
- Compressed and encrypted PDF files are generated when scanning
- Extensive security features
- All functions are optimally synchronised using SynControl technology



Standard features:

CDC 1725 with 2 x 500 sheet universal cassettes, duplex unit and 80 GB hard disk



- 1 Original cover\* or original paper feeder\*
- 2 Optional 2 x 500 sheet universal cassettes\*, 3,000 sheet large capacity cassette\* or cabinet\*
- 3 Job separator\*
- 4 1,000 or 3,000 sheet finisher\*, staples up to 50 sheet
- 5 Brochure module\* for the 3,000 sheet finisher
- 6 Hole punch unit\* for the 3,000 sheet finisher
- 7 Multi tray\* for the 3,000 sheet finisher (no illustration)
- 8 Fax system (Q)\*, additionally Internet Fax Kit (A)\*
- 9 Printed Document Guard Kit (A)\*
- 10 Data Security Kit (E)\*



\*option

## TECHNICAL DATA

## GENERAL

Type	Desktop
Function	Copy, print, scan, optional: fax
Print technology	Laser colour and b/w
Original format	max A3 from platen glass
Copy/print speed	max 25 A4 pages/min and max 13 A3 pages/min in colour and b/w
1st copy/warm-up time	Colour: 8.1 seconds*, b/w: 6.2 seconds*/30 seconds
Copy resolution	600 x 600 dpi
Greyscales	256
Paper feed	2 x 500 sheet universal cassettes (A3-A5R), 100 sheet multi-bypass (A3-A6R)
Paper weights	Universal cassette 60-163 g/m <sup>2</sup> , multi-bypass 60-220 g/m <sup>2</sup> , duplex 60-163 g/m <sup>2</sup>
Paper output	250 sheet A4
System memory	2,048 MB RAM, 80 GB HDD**
Continuous copying	1-999 copies
Zoom	25%-400% in steps of 1%
Functions	Adjustable touch screen, duplex, 1,000 management codes, multi tasking controller, direct printing from USB stick, colour optimizer for printing, 50 job programs for copy, scan, fax, etc.

## DIMENSIONS/WEIGHT

Dimensions	745 x 605 x 680 mm (H x W x D)
Weight	approx. 106 kg

## ENVIRONMENT

Mains voltage	220/240 V, 50 Hz
Power consumption	approx. 860 W in operation, approx. 160 W in stand-by mode, approx. 16 W in sleep mode
Noise level	approx. 65.5 dB(A) in operation, approx. 56.9 dB(A) in stand-by mode (ISO 7779/9296) approx. 66.4 dB(A) in operation, approx. 38.5 dB(A) in stand-by mode (Blue Angel Mark test method)
Safety	GS/TÜV, CE

## PRINT SYSTEM

Type	Integrated within the system
Print format	A3-A6R
Print resolution	600 x 600 dpi, max 9,600 dpi level x 600 dpi
Processor	PowerPC 750FL/600 MHz
Interface	USB 2.0, 10/100 BaseTX, USB host, CF slot
Network protocols	TCP/IP, IPX/SPX, Net BEUI, EtherTalk
Operating systems	Windows 2000, XP, Vista, Server 2003/2008, Novell NetWare, Linux, Max ex OS 10.5
Emulations	PCL6, KPDL 3 (PostScript 3 compatible), XPS, PRESCRIBE IIc
Functions	Duplex, PDF direct printing, printing of e-mails, private printing, barcode printing

## SCAN SYSTEM

Scan type	CCD colour and b/w
Scan format	max A3
Scan speed	Colour and b/w: max 50/60 (simplex/duplex) A4 originals/min in 300 dpi with DP-760
Scan resolution	200 dpi, 300 dpi, 400 dpi, 600 dpi
Scan mode	Photo, text, photo/text, OCR
File types	TIFF, PDF, JPEG, high compression PDF and encrypted PDF
Interface	10/100BaseTX
Network protocol	TCP/IP
Operating systems	Windows 2000, XP, Server 2003/2008, Vista, Linux, Max ex OS 10.X
Functions	Scan to SMB, scan to e-mail, scan to FTP, TWAIN scan (Windows 2000, XP, Vista only), WIA scan (Windows Vista), SMTP authentication, LDAP, PDF compression and encryption

## OPTIONAL FAX SYSTEM (Q)

Compatibility	Super G3
Original format	max A3
Modem speed	33.6 kbps
Transmission speed	3 seconds or less using JBIG
Compression method	JBIG, MMR, MR, MH
Fax resolution	Standard (200 x 100 dpi), fine (200 x 200 dpi), ultra fine (400 x 400 dpi), 600 x 600 dpi
Fax memory	12 MB, max 120 MB
Operating systems	Windows 2000, XP, Vista
Functions	Network fax driver, automatic redialling, delayed transmission

## OPTION

Original feeder	DP-750 document processor with automatic reverse (A3-A5R, paper weight 45-160 g/m <sup>2</sup> ), DP-760 document processor with simultaneous duplex scanning (A3-A5R, paper weight 45-160 g/m <sup>2</sup> )
Platen cover	Platen cover type E (if document processor is not installed)
Finisher	DF-780 (capacity: 1,000 sheet A4, stapling max 50 sheet A4), DF-760 (capacity: 3,000 sheet A4, stapling max 50 sheet A4), PH-5C hole punch unit for DF-760, BF-720 brochure module for DF-760 (max 16 sheet saddle stitching and folding A3/A4/B4), MT-720 multi tray for DF-760
Job separator	JS-720 (capacity: 100 sheet A4)
Paper feed	PF-720 (2 x 500 sheet universal cassettes (A3-A5R)), PF-760 (3,000 sheet large capacity cassette (A4/B5))
Other options	Data security kit (E), Internet fax kit (A), Printed document guard kit (A), DT-710 document tray, cabinet no. 56



SynControl centrally controls and synchronises all functions (copying, printing, scanning and faxing) and enables the parallel processing of data.

The CDC 1725 is manufactured in accordance with the requirements of the ENERGY STAR Program. UTAX recommends that you use only genuine UTAX accessories for trouble-free operation of your system. For recommended print media refer to the user manual.

Specifications subject to change without notice.

Image shows machine with optional accessories.

Your UTAX dealer

Following in-depth analysis of all output systems used in the company, with our **UTAX DOCUMENT CONSULTING** sales concept we create an offering precisely tailored to the customer's needs. Using the very **latest UTAX digital systems** in combination with **practical software solutions** from the DMS areas of archiving, form printing and accounting, the entire **output and document management** becomes extremely efficient and **costs are reduced**.

[www.utax.com](http://www.utax.com)

UTAX and the UTAX logo are registered trademarks of UTAX GmbH. All other brand names referred to are registered trade-marks of the respective manufacturers.